

REASONS TO WORK AT BIO INNOVATION



The Bio INNOVATION development centre by Temis...

A comprehensive range of services for inventing new medical devices and biotherapies in an outstanding environment.

By joining Bio INNOVATION you will:



RESEARCH



CLINICAL



DEVELOPMENT



MARKET

1. Be part of a **multitechnology ecosystem** with **clinical connections**
2. Benefit from unique **scientific and technological expertise** in microtechnology, engineering sciences and life sciences
3. Have access to **qualified resources** (stem cells, blood cells, corneas, etc.) and state-of-the-art **technological platforms and centres** (qualified pharmaceutical biomanufacturing suites, microfabrication, micromanipulation, etc.)
4. Benefit from technical, regulatory and clinical resources as soon as the project is defined
5. Bridge the gap with clinical partners and facilitate clinical trials (ECRIN and Tech4Health networks)
6. **Pre-industrialize** with local partners thanks to the dense industrial **medtech** network with its **competitive cluster** and **Innov'Health cluster**
7. Join the entrepreneurial dynamics of the **French tech # Health tech** network and ProPulseur accelerator
8. Make the most of a dedicated working environment in the heart of the Temis Santé science park.

Contact:

Temis Technopole
Bruno Favier, Director
Tel. 33 (0)3 81 50 46 95
contact@temis.org
www.temis.org

Developed by: sedia
Investors: Greater Besançon Council & Aktya
With the support of Regional and Central government



« The Bio INNOVATION development centre will be a place where researchers and engineering or medical students can meet microtechnology professionals to discuss their needs and build collaborative projects »

A UNIQUE PLATFORM OF SERVICES, EXPERTISE AND RESOURCES TO GENERATE OR ACCELERATE INNOVATION

Research Development Market

Bio INNOVATION
Development centre
■ BESANÇON • BURGUNDY-FRANCHE-COMTÉ • FRANCE

4,000 m² of resources

Premises

Fixtures

Experts

Strategic areas of activity

blood products and technologies

medical devices

RESOURCES, SERVICES AND EXPERTISE



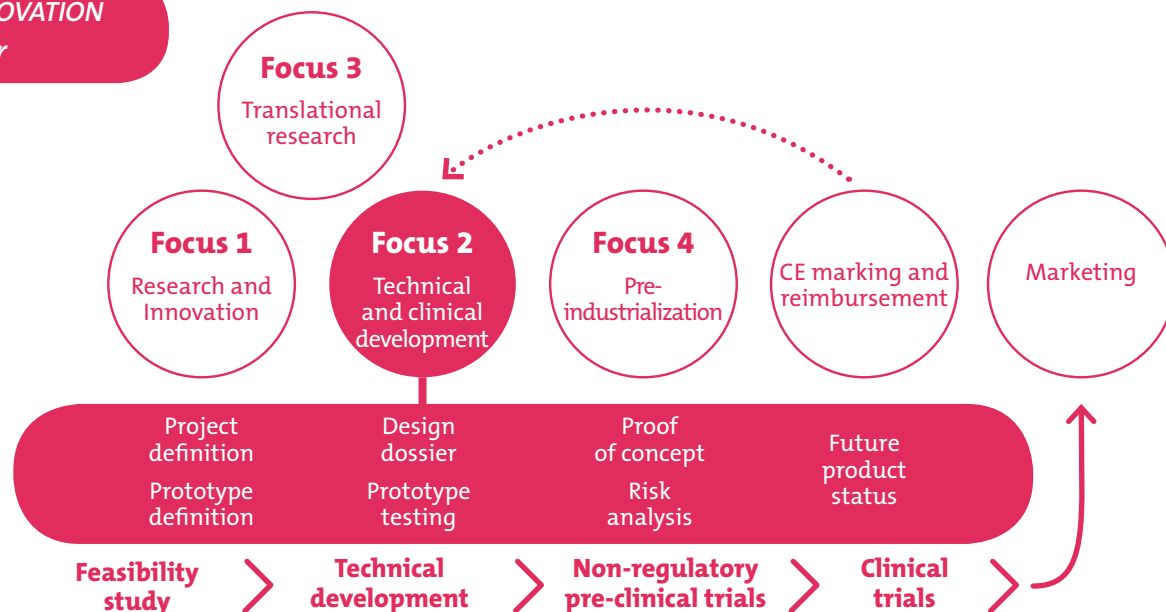
Opens in
september
2019

An open innovation platform combining microtechnology, life sciences and engineering sciences.

In direct contact with higher education institutions (Medical and Pharmacy Faculty, ISI FC), the University Hospital, its Clinical Investigation Centre and its Oncology and Biology Centre (PC BIO), BIO INNOVATION will bridge the gap between research and clinical practice and between design and biomanufacturing.

With a focus on blood-related biotech, medtech and diagnostics, the BIO INNOVATION development centre will support early-stage collaboration between engineers, clinicians and entrepreneurs.

The BIO INNOVATION service offer

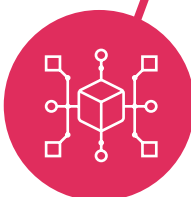


2,300 m²
of dedicated
premises

A customized
rental offer with
a duration
to suit your needs:
offices, laboratories,
fixtures and fittings



4,000 m²
to promote your
health
innovations



Access to
700 m²
of technological
platforms

shared
spaces



1 coworking
space



1 showroom



1 seminar
area

AN ECOSYSTEM FOSTERING INNOVATION



The BIO INNOVATION development centre will be located in an outstanding environment in the TEMIS Santé science park in Besançon. It will be the iconic landmark of the French Tech # Health Tech network for medical innovation in Burgundy-Franche-Comté.

Based on an open, collaborative innovation model, the centre will give guaranteed access to a range of services from project definition to proof of concept and future product status analysis.

Fast-tracking technical and clinical development, BIO INNOVATION will ensure that your new products are industrialized and marketed.



350
companies,
10,000 employees

23
research
units

40
medical
start-ups

1,100
qualifications per year,
from vocational high
school-level certificates
to engineering degrees

1 microtechnology
competitive cluster

*The French tech # health tech network
of Besançon and the surrounding areas*

1 business
incubator

1 Innov'Health
cluster

7 higher education
institutions

